



Big Sandy Area Lakes Watershed Management Project Annual Meeting Financial and Activity Report July 2017 – June 2018



During the past year the BSALWMP worked to implement
2 different grant programs.

EPA Section 319 Grant (MPCA)

Grant Period February, 2015 through August, 2018

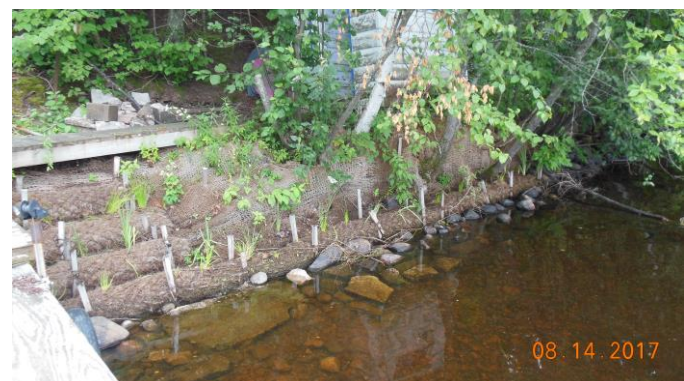
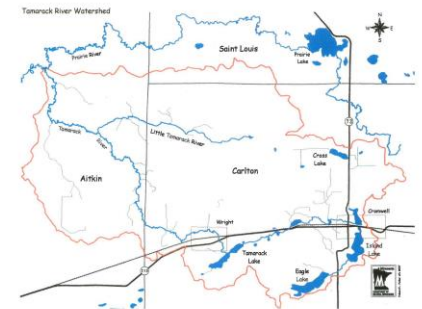
Grant Total = \$86,100

Spent Previous Periods = \$ 45,899.88

Spent This Period = \$ **15,882.47**

During this reporting period grant funds were spent on:

- Several Education Activities –a Watershed Wide Newsletter, Lake Association Newsletters, and the Watershed Website/Facebook page. Information was shared at the Aitkin County Rivers and Lakes Fair and the Cromwell Summer Fest.
- Financial support was given to the Cromwell-Wright School team participating in the State Science Fair, and the “Water!” presentation at the Aitkin County Environmental Education Day for 6th grade students.
- A Watershed presentation was shared with 3rd grade students at the Cromwell-Wright School.
- A Lake Association / Lake Advocate Sharing Session was held at the end of June.
- Two project tours were held in the second half of 2017. In July we toured cost share project sites on Bridge Road of Big Sandy Lake. In October a tour of the Tamarack River Watershed was held. This tour visited several lakes in this subwatershed and shared information about what makes these areas unique.
- Rain Barrel Incentive Program continued to be promoted. Three Rain Barrels were sold.
- Water Quality Monitoring on Prairie, Island (North and South), Eagle, Minnewawa, and Big Sandy Lakes was conducted in July, August, and September.
- Installation of 3 water quality protection projects was completed. A rain garden will capture stormwater runoff near Lake Minnewawa. Eroding shorelines were stabilized on Prairie Lake and Round Lake.
- Funds were also spent on coordination and administration services.



Aquatic Invasive Species Activities Grant (Aitkin County)

Grant Period: 2018

Grant Total = \$ 3,684

Total Expenditures (through June 2018) = \$ 2,702.99

Grant funds were used to purchase AIS themed placemats and an AIS Identification insert in the Watershed Wide Newsletter. This grant also supported the Cromwell-Wright 3rd Grade AIS Education Event.

Volunteers have coordinated implementation of these efforts.



**STOP AQUATIC
HITCHHIKERS!**

Prevent the transport of nuisance species.
Clean all recreational equipment.
www.ProtectYourWaters.net

What is the Big Sandy Area Lakes Watershed?
A watershed is an area of land drained by a particular stream, water system, or body of water. The Big Sandy Lake Watershed is much more than just Big Sandy Lake. The watershed includes the following, and much more:
• Portions of three counties – Aitkin, Carlton, and St. Louis
• 4 cities – Cromwell, McGregor, Tamarack, and Wright.
• Nearly 280,000 acres
• 49 lakes, including Big Sandy, Minnewawa, Prairie, Island, and more...

A lake reflects its watershed. Water and everything that it carries – from soil to animal waste to oil – drain into a lake from a watershed. A watershed's landscape can be range from undisturbed and/or natural areas to places modified by humans. When the land is managed and used wisely, the watershed and consequently the lake, should remain healthy.

The Big Sandy Area Lakes Watershed Management Project was organized in 1991 in an effort to encourage partnership in protecting and enhancing the esthetic, ecological, economic, agricultural, and recreational value of lakes, streams, shoreland, and wetland resources in the Big Sandy Area Lakes Watershed Management Project.

Support the Effort to Stop Aquatic Hitchhikers!!

STOP AQUATIC HITCHHIKERS!
Prevent the transport of nuisance species.
Clean all recreational equipment.
www.ProtectYourWaters.net

THE LAW REQUIRES THAT YOU

CLEAN: All visible plants, and prohibited invasive species from all watercraft and related equipment before leaving any water access.

DRAIN: Boat ballast tanks, portable bait container, motor, bilge, live-well and bait-well by removing drain plugs before leaving access. Keep drain plugs out and water draining device open while transporting watercraft.

DISPOSE: of unwanted bait, including minnows, leeches, and worms, in the trash. If you want to keep your live bait, you must refill the bait container with bottled or tap water.

VIOLATING THESE REGULATIONS MAY RESULT IN FINES UP TO \$1,000

HOW AIS HURTS MINNESOTA WATERS...
Once AIS moves in, it is almost impossible to get them out!
They...
• Spread uncontrollably
• Harm fish populations
• Impair water quality & recreation
• Displace native species
• Damage habitats
• Cost millions of dollars just to control

For more ideas on protecting the water quality of the Big Sandy Lakes Watershed checkout www.bsalmwp.org or follow us on facebook

In addition to these new activities, volunteers continued to distribute AIS themed tote bags and floating keychains.

Additional Activities:

- Special Presentations: Report on Cost Share Project Spot Checks, Maya Schneider, Conservation Corp Apprentice; Implementing the State Buffer Law in Aitkin County, Shannon Westerlund, Aitkin County Buffer Specialist; Mineral Exploration Update, Brian Goldner, Kennecott Exploration; Agricultural Water Quality Certification, Ryan Clark, Carlton County SWCD Ag Water Quality Certification Specialist; The Forest and Water Quality Connection, Mitch Lundeen, SWCD North Region Forester.
- Members participated in the Mississippi River Grand Rapids Watershed Restoration and Protection Strategies (WRAPS) study.

TOTAL EXPENDITURES THIS PERIOD = \$ 18,585.46